

**FAR
BEYOND**

MAT122

Continuity



Stony Brook University

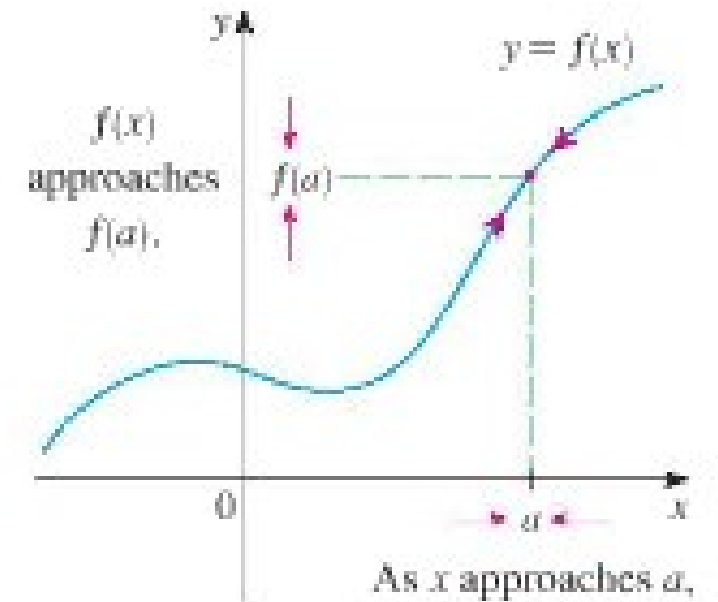
Continuity - Definition

Rule of Thumb: f is continuous where graph can be drawn without picking up pen from paper

a function f is **continuous at $x=a$** if

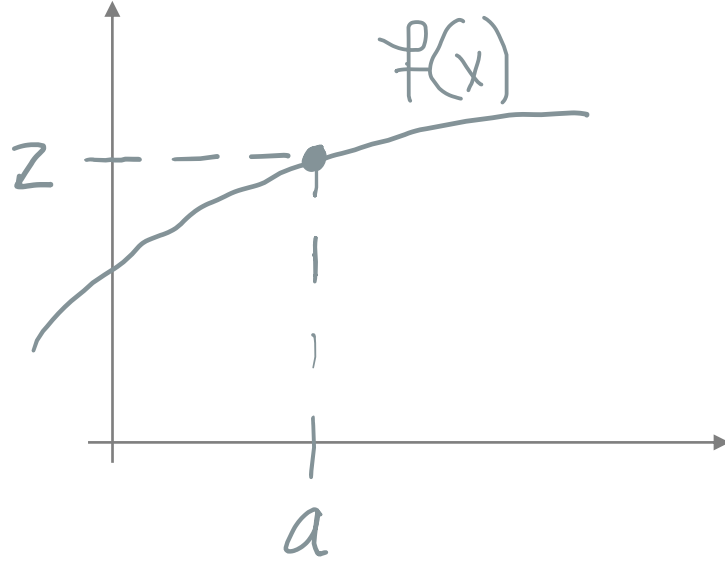
$$\lim_{x \rightarrow a} f(x) = f(a)$$

i.e., if f is continuous at a , following conditions must be met:

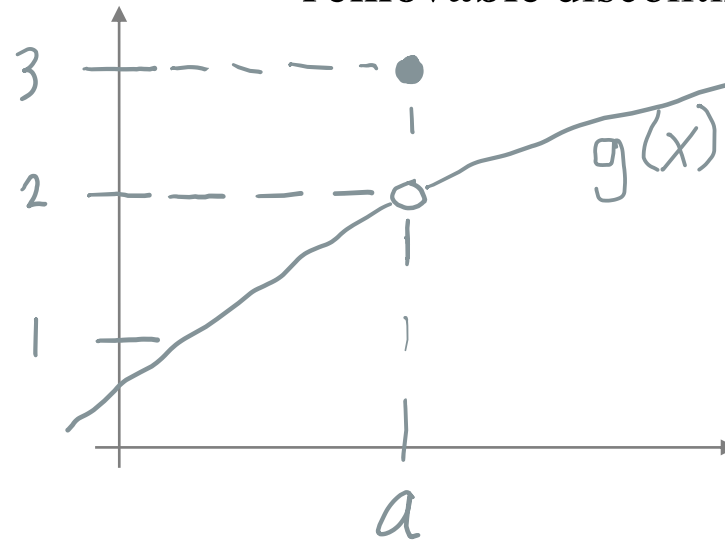


Discontinuity

continuous at $x = a$



removable discontinuity



jump discontinuity

